

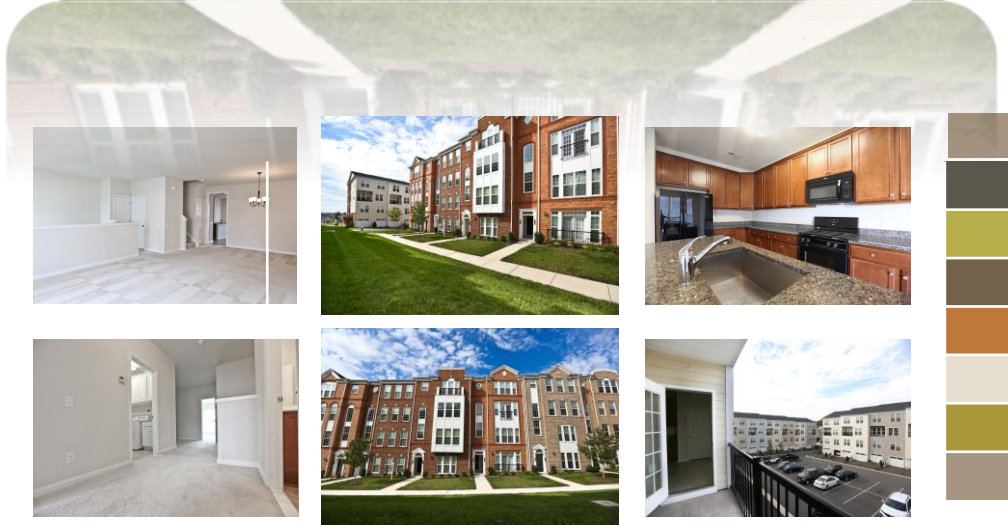
## Highlights

- ❖ 2 Stories
- ❖ Upper level townhouse/condo
- ❖ Built in 2013
- ❖ Like new condo-townhouse
- ❖ Open floor plan throughout
- ❖ 3 Bedrooms
- ❖ 2.5 Full bathrooms
- ❖ Master bedroom w/walk-in closets
- ❖ Study area/office on top floor
- ❖ 2 sizable guest bedrooms
- ❖ 1 car garage
- ❖ Approximately 2300+ sq ft
- ❖ Brick front
- ❖ Carpeting throughout
- ❖ Large Master bath w/double vanity
- ❖ Open gourmet kitchen
- ❖ Breakfast room
- ❖ Granite counter tops
- ❖ Near commuter route, park & ride and major highways
- ❖ Clubhouse with fitness room, pool and more
- ❖ Walk to shops and restaurants
- ❖ Great school district

For  
**SALE**

## *Welcome to your Future Home*

***42779 BURRELL SQ, ASHBURN, VA 20147***



Contact us today to set you up with your future home



**Reza Rofougaran**  
NVAR Multi-Million Dollar Sales Club  
Managing Broker  
Northern Virginia Homes  
703-734-0400 (office/Cell)  
Reza@VMDCRealty.com

**Matt Rofougaran**  
Real Estate Sales Person  
Northern Virginia Homes  
703-856-5613 (office/Cell)  
Matt@VMDCRealty.com

Please call to arrange a private viewing [www.VMDCRealty.com](http://www.VMDCRealty.com)

[www.NorthernVAHomes.com](http://www.NorthernVAHomes.com)

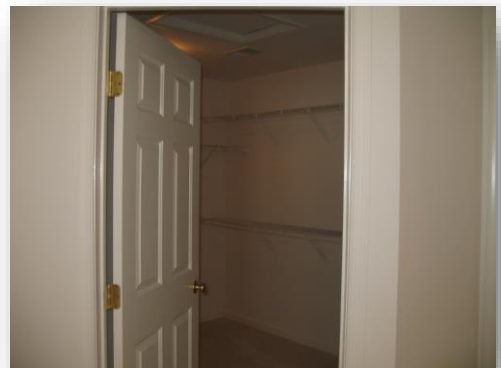
### **Gourmet Kitchen with Granite Countertops**



### **2 Full bathrooms and 1 half bathrooms**



### **Large Master suite with large walk-in closet**



### **Open format throughout**





1 car garage with private driveway



Community clubhouse with large outdoor pool



Multiple various playgrounds



Walk to local shops and restaurants



# Located in *Goose Creek Village* of *Ashburn, Virginia*

Goose Creek Village is a master-planned community being developed on a superbly located, majestic parcel of land in Ashburn, Virginia. It dominates the area as the highest site in eastern Loudoun County, affording views of the mountains 20 miles to the west. The 174-acre Village include; 650 homes, a 180,000 square foot Goose Creek Village Center, and 800,000 square feet of office space sitting atop the Dulles Toll Road extension, known as the Dulles Greenway. Enjoy the 40-acre open space area along Goose Creek Village with nature trails throughout, offering a unique recreational opportunity. Bike paths and walking trails surround the entire Village. There is a one-acre park and ride in the office complex. Live, work and play in Goose Creek!



Located in the Loudoun County Public Schools district which is known as one of the top public schools district in the nation this beautiful townhome is inside the Belmont Station Elementary School, Trailside Middle School and Stone Bridge high school district. Loudoun county public schools is the fastest growing school division in Virginia and one of the fastest growing public school districts in the United States. According to the Washington Post's Challenge index Loudoun's public high schools ranked in the top 6 percent nationally. This is a lovely top level two floor townhouse/condo with a 1 car garage. You will absolutely love this house filled with plenty of storage, driveway, deck, Loft/Study area on upper floor with a spacious-large master suite. Relax in your master suite and enjoy your 2 additional bedrooms. There is a 1/2 bath and breakfast nook on the main level. Main level also has a impressive gourmet kitchen w/granite, upgrades & a beautiful open format.



Northern Virginia Community College – Loudoun Campus



Downtown Historic Leesburg



Elizabeth Mills Riverfront Park



Goose Creek Village



Leesburg Animal Park



Fall yearly festival



The Golf club at Lansdowne



Lansdowne town center