

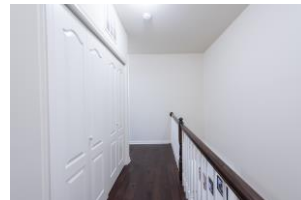
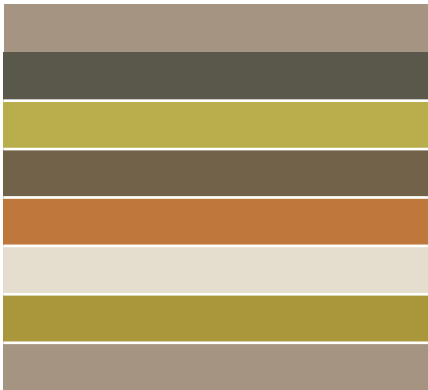
For Sale

Welcome to your Future Home

23508 Belvoir Woods Ter Ashburn, VA 20148



- ❖ 2 Stories Condo/Townhouse
- ❖ 5 years young
- ❖ Like new townhouse
- ❖ Open floor plan throughout
- ❖ 3 Bedrooms
- ❖ 3 bathrooms
- ❖ Master bedroom w/walk-in closets
- ❖ Vaulted Ceilings in Master Bedroom
- ❖ 2 sizable guest bedrooms
- ❖ 1 car garage
- ❖ Approximately 1600+ sq ft
- ❖ Brick front
- ❖ Hardwood flooring on main floor
- ❖ Large Master bath w/double vanity
- ❖ Open gourmet kitchen
- ❖ Stainless Steel appliances
- ❖ Granite counter tops
- ❖ Near commuter route, park & ride and major highways
- ❖ Clubhouse with fitness room, pool and more
- ❖ Walk to shops and restaurants
- ❖ Great school district



Contact us today to set you up with your future home



Reza Rofougaran
NVAR Multi-Million Dollar Sales Club
Managing Broker
Northern Virginia Homes
703-734-0400 (office/Cell)
Reza@VMDCRealty.com

Matt Rofougaran
Real Estate Sales Person
Northern Virginia Homes
703-856-5613 (office/Cell)
Matt@VMDCRealty.com

Please call to arrange a private viewing www.VMDCRealty.com www.NorthernVAHomes.com

Open floor plan with hardwood floors on main floor



Gourmet Kitchen w/Granite Countertops & Stainless-Steel Appliances



3 bathrooms



Large Master suite with large walk-in closet



1 car garage with private driveway



Community clubhouse with large outdoor pool



Outdoor Neighborhood Amenities



**Indoor
Neighborhood
Amenities**



Located in *Ashburn, Virginia*

Pristine Move-In Ready Townhouse Style Condo in Buckingham at Loudoun Valley with 3 Bedrooms, 2.5 baths, 1 car garage in highly sought after Buckingham at Loudoun Valley, built by Toll Brothers. Lower Level Condo, like a Model Home, with tons of upgrades; Gourmet Kitchen includes custom rustic ceramic tile back splash, center island, breakfast bar, double ovens and upgraded stainless steel appliances. Master Suite with Attached Bath (2 shower heads!) and Balcony. Gorgeous Hardwoods throughout the main including upper hallway. Low maintenance living. Wonderful sound system throughout the unit including all rooms in main and upper level. Crown molding and chair rail. Upstairs three generously sized bedrooms, including owners suite with tray ceiling master bathroom with tub and shower, Owners suite also boasts huge walk-in closet and balcony for exterior living. Upper level hall with washer/dryer and shelving for ample storage. Second and Third Bedrooms share second Bathroom. Condo has gas heat, upgraded Water Heater. Enjoy the community feel of the Buckingham at Loudoun Valley, with walking trails, playgrounds, three pools, three gyms, clubhouses with billiards and shuffleboard, tennis courts and courtyards with grills. Excellent location close to airport/major highways. Close to Commuter Routes, including Loudoun County Parkway, Routes 267 and 50 and Waxpool Road. Condo community is also close to future Loudoun Metro Silver Line Station, scheduled to open in 2021. Hurry To A Place You Can Truly Call Home!

Located in the Loudoun County Public Schools district which is known as one of the top public schools district in the nation this beautiful Condo/townhome is inside the Rosa Lee Carter Elementary School, Stone Hill Middle School and Rock Ridge High school district. Loudoun county public schools is the fastest growing school division in Virginia and one of the fastest growing public school districts in the United States. According to the Washington Post's Challenge index Loudoun's public high schools ranked in the top 6 percent nationally. This is a lovely top level two floor townhouse/condo with a 1 car garage. You will absolutely love this house filled with plenty of storage, driveway, deck, open floor plan and a spacious-large master suite. Relax in your master suite & enjoy your 2 additional bedrooms.



Northern Virginia Community College – Loudoun Campus



Downtown Historic Leesburg



Elizabeth Mills Riverfront Park



Loudoun is known for Wineries



Leesburg Animal Park



Fall yearly festival



The Golf club at Lansdowne



Lansdowne town center